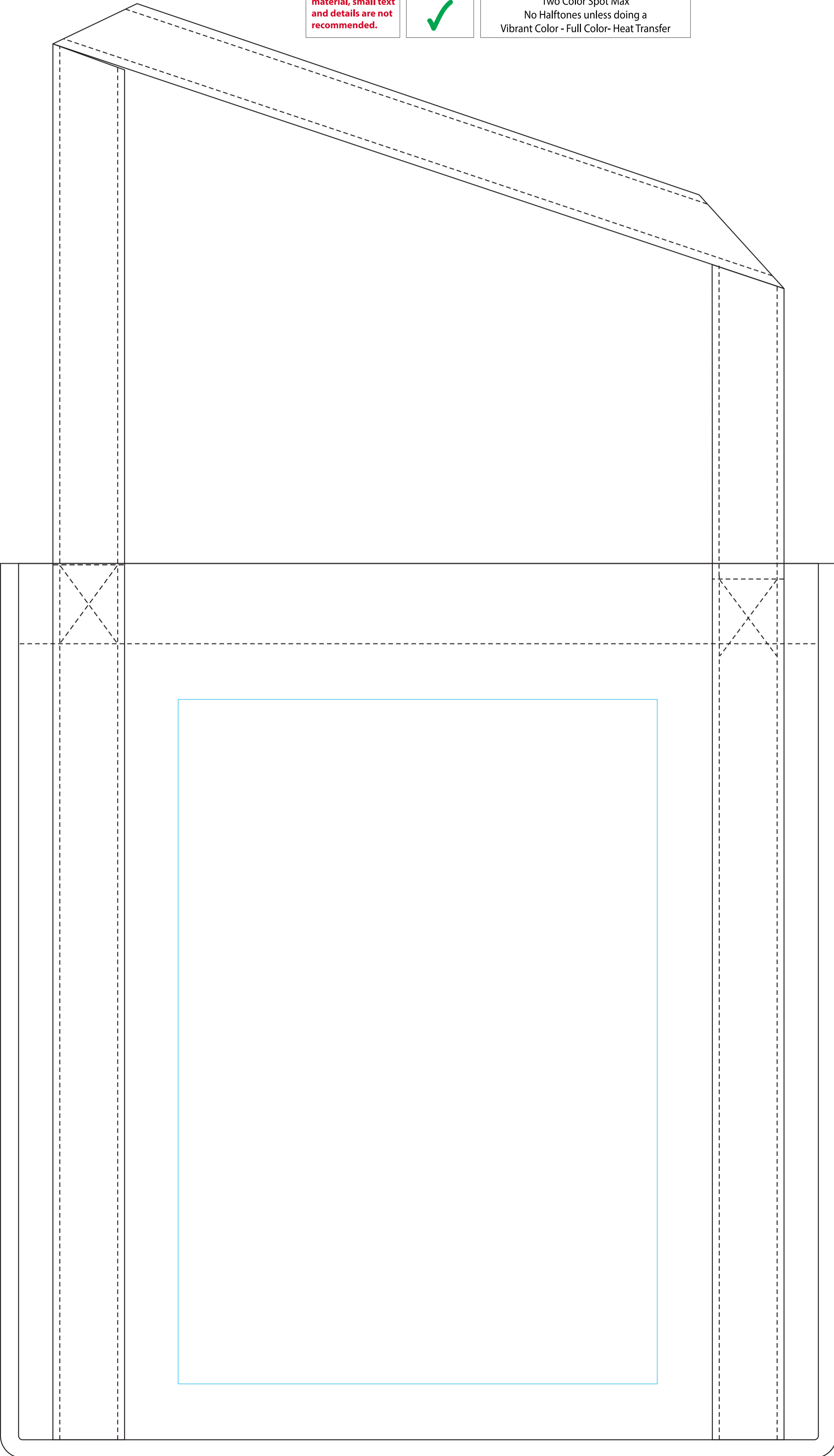
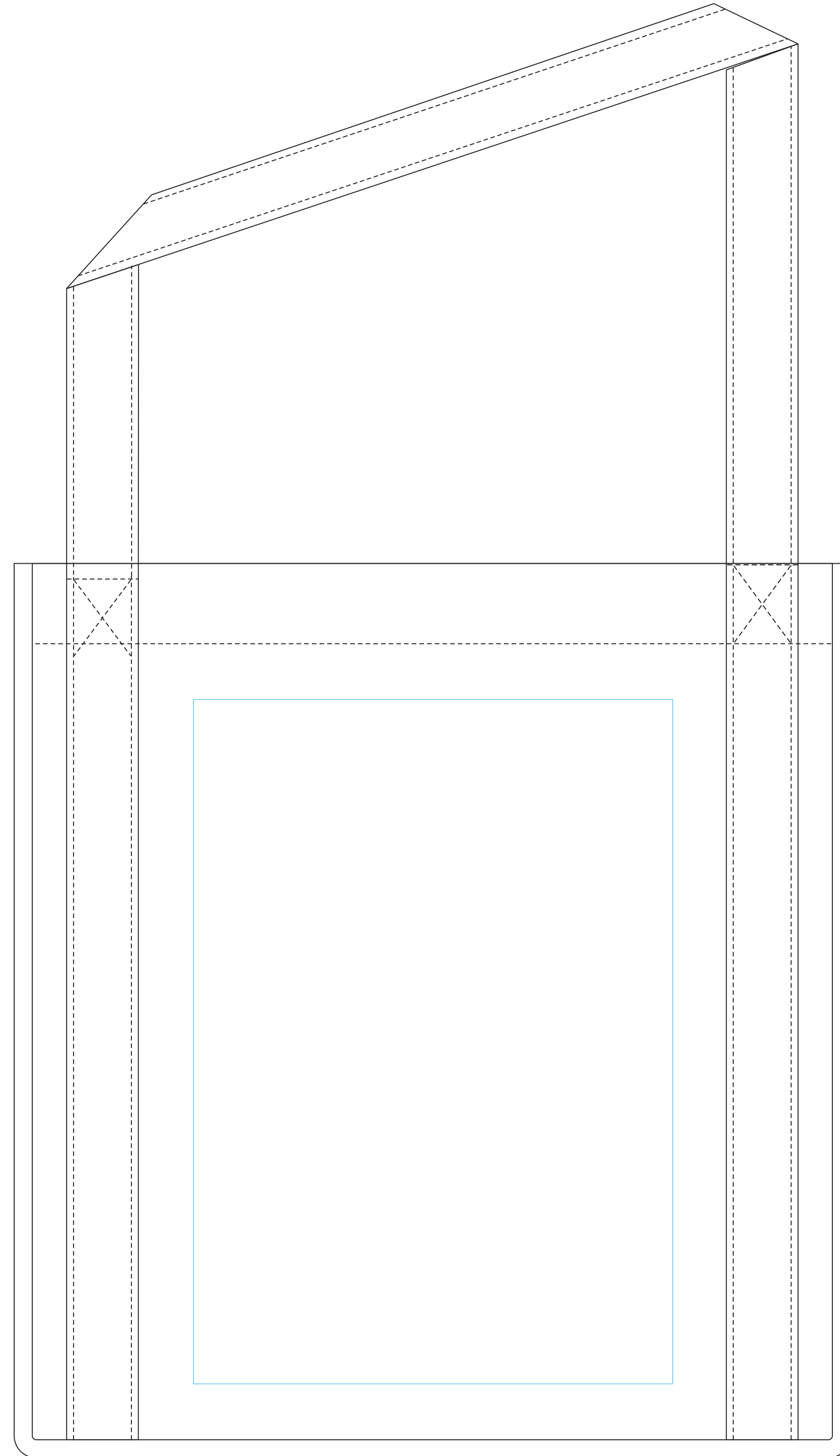


| | |
|--|--|
| Minimum Line Thickness 1.25 pts | Text size Aa Bb Cc Dd Ee Ff Gg Hh Ii Jj Kk Ll 15pts |
| Inverted 2 pts | Aa Bb Cc Dd Ee Ff Gg Hh Ii Jj Kk Ll Inverted 15pts |
| Font Style on small text size | |
| <small>Arial Regular or any light type font</small> Aa Bb Cc Dd Ee Ff Gg Hh Ii Jj Kk Ll Mm Nn Oo Pp Qq Rr Ss Tt Uu Vv Ww Xx Yy Zz | BOLD fonts tend to close the eye of the letters X Aa Bb Cc Dd Ee Ff Gg Hh Ii Jj Kk Ll Mm Nn Oo Pp Qq Rr Ss Tt Uu Vv Ww Xx Yy Zz |
| Due to product material, small text and details are not recommended. | Vibrant Color ✓ |
| Number of Ink Colors Available Two Color Spot Max No Halftones unless doing a Vibrant Color - Full Color- Heat Transfer | |

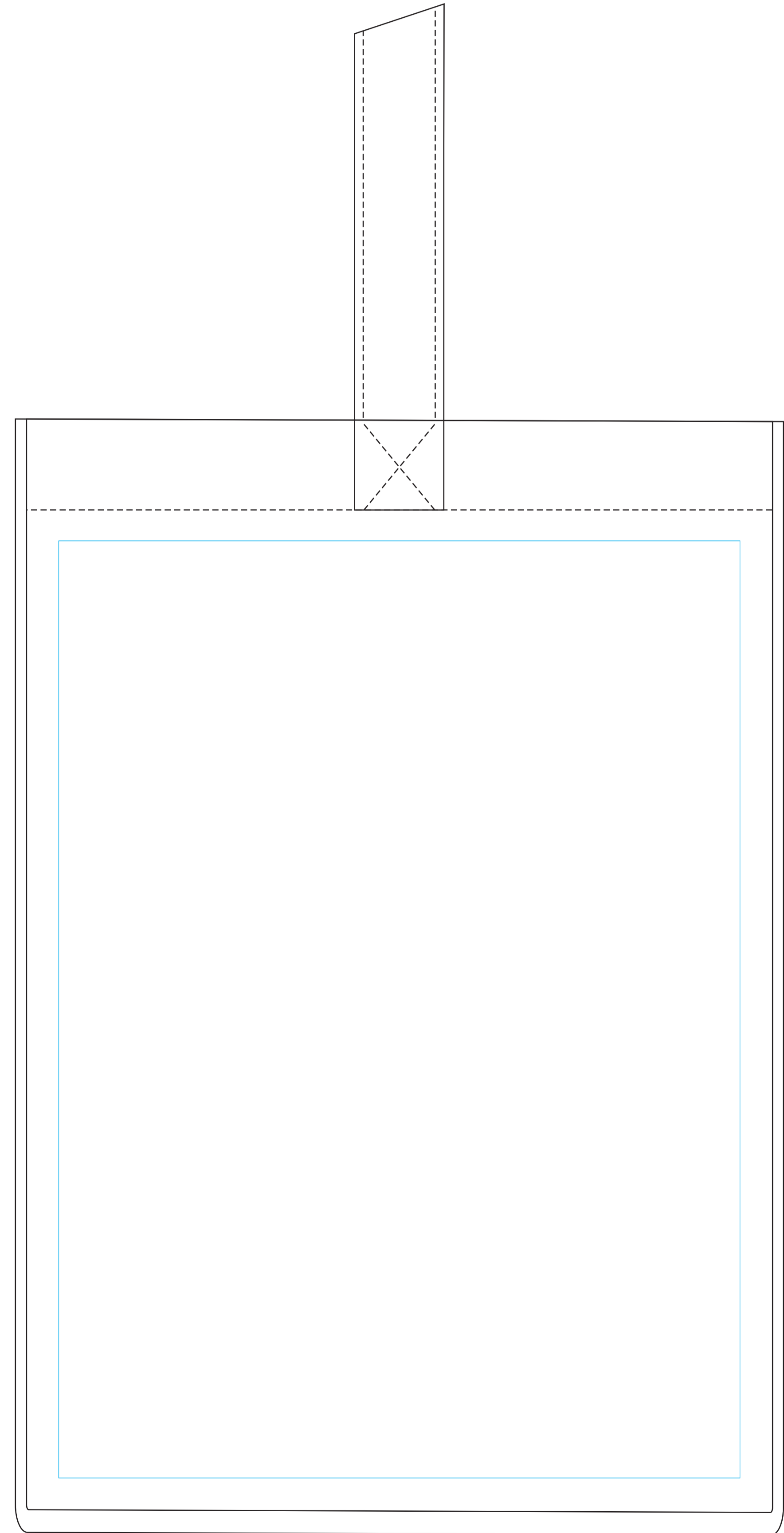
Product Information **Product Name: Large Non-Woven Grocery Tote** **Item # 8010**
Imprint Area: Each Side: 10"H x 7"W **Gusset Imprint Area (Each Side): 11"H x 8"W**



Front



Back



Gusset