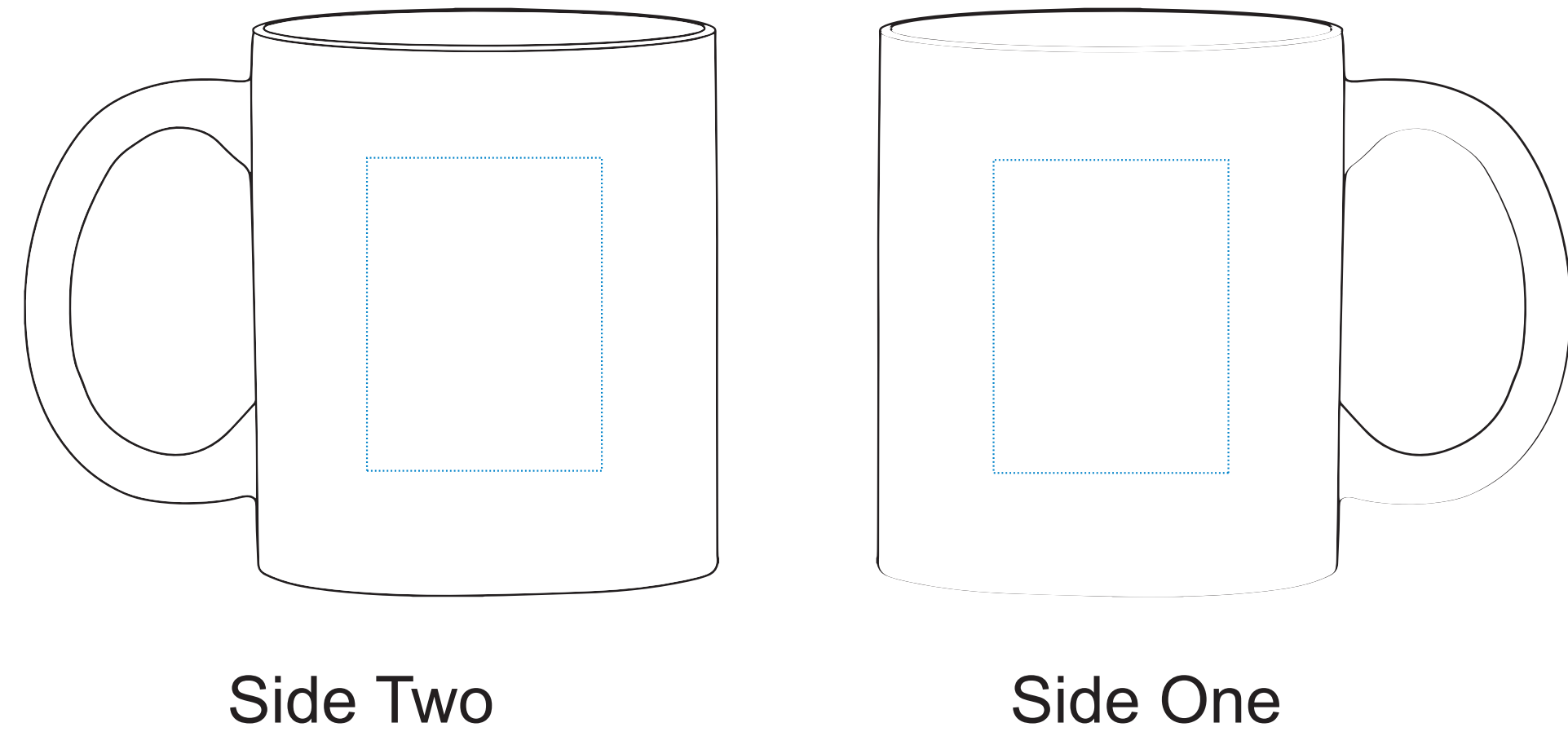


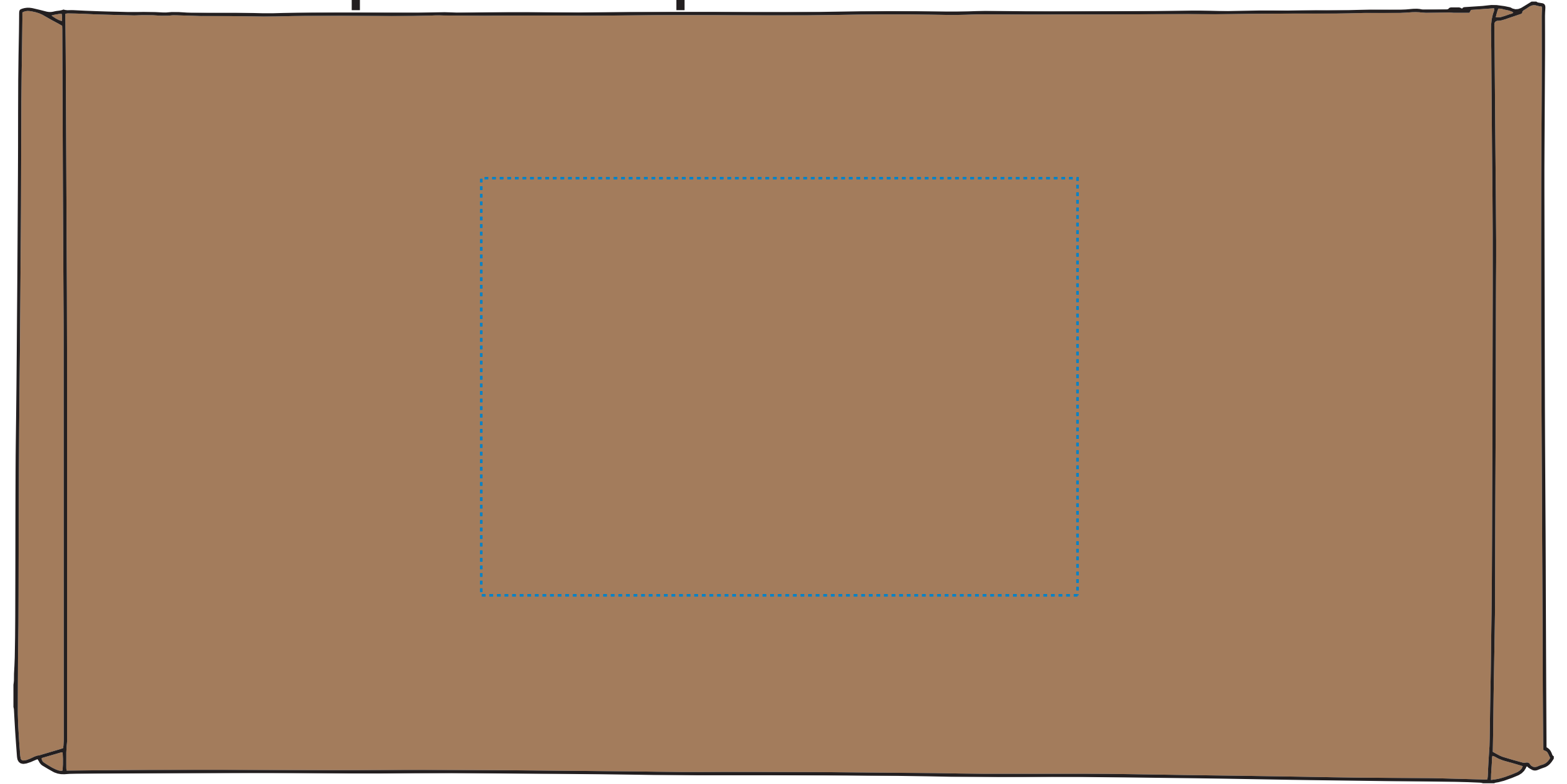
|                            |  |                    |
|----------------------------|--|--------------------|
| <b>Product Information</b> | <b>Product Name:</b> 4885 11oz Sunrise Ceramic Mug Gift Set      | <b>Item #</b> 4885 |
|                            | <b>Imprint Area Box:</b> Top: 3 1/2" H x 5" W    Flap: 2"H x 5"W |                    |
|                            | Left justified (for Drop ship labels): 3 1/2" H x 3 1/2" W       |                    |
|                            | <b>Imprint Area Item:</b> Laser Engraved: 2" H x 1 1/2" W        |                    |

**PMS COLOR MATCHING NOT AVAILABLE FOR DIGITAL FULL COLOR**

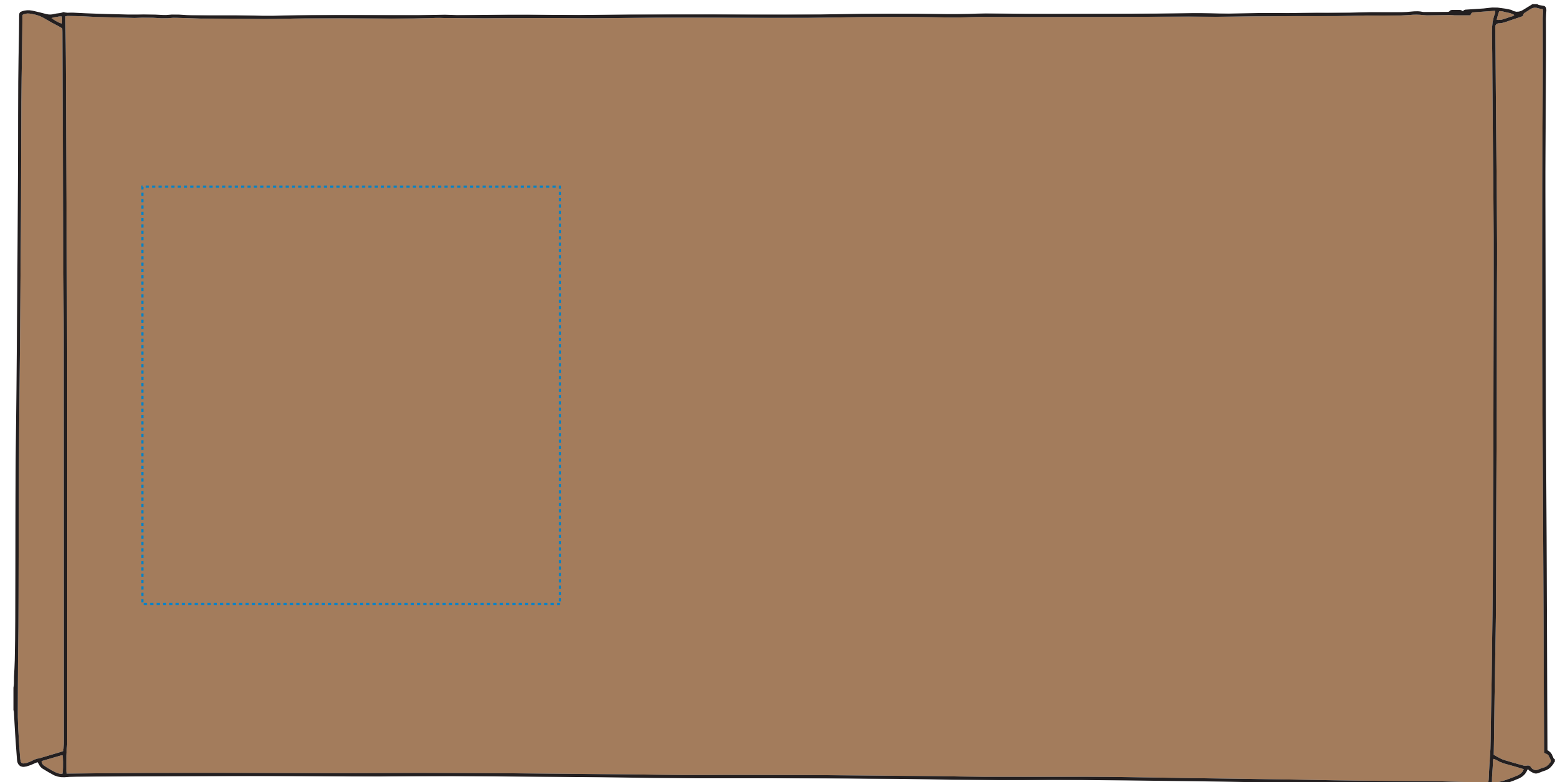
|   |                                    |  |   |                           |   |
|---|------------------------------------|--|---|---------------------------|---|
| <b>Minimum Line Thickness</b><br>1 pts  | <b>Minimum Point Size</b><br>9 pts | <b>Item information</b>  | <b>Minimum Line Thickness</b><br>1.25 pts                                     | <b>Text size</b><br>15pts | <b>Box information</b>  |
| Inverted 1.5 pts  | Inverted 10 pts                    | Aa Bb Cc Dd Ee Ff Gg Hh Ii Jj Kk Ll Mm Nn Oo Pp Qq Rr Ss ...<br>Aa Bb Cc Dd Ee Ff Gg Hh Ii Jj Kk Ll Mm Nn Oo Pp Qq Rr Ss ... | Inverted 2 pts  | Inverted 15pts            | Aa Bb Cc Dd Ee Ff Gg Hh Ii Jj Kk Ll   |
| Arial Regular or any light type font  |                                    | Font Style on small text size  | Arial Regular or any light type font  |                           | Font Style on small text size   |
| Aa Bb Cc Dd Ee Ff Gg Hh Ii Jj Kk Ll Mm Nn Oo Pp Qq Rr Ss Tt Uu Vv Ww Xx Yy Zz |                                    | <b>BOLD</b> fonts tend to close the eye of the letters   | Aa Bb Cc Dd Ee Ff Gg Hh Ii Jj Kk Ll Mm Nn Oo Pp Qq Rr Ss Tt Uu Vv Ww Xx Yy Zz |                           | <b>BOLD</b> fonts tend to close the eye of the letters  |
| Halftones   | Vibrant Color                      | Number of Ink Colors Available<br>One Color Spot Max   | Due to product material, small text and details are not recommended.          | Vibrant Color             | Number of Ink Colors Available<br>Two Color Spot Max<br>No Halftones unless doing a Vibrant Color - Full Color- Heat Transfer |
| X   | X                                  |  |   | ✓                         |   |



### Standard Top of Box Imprint



### Left justified (for Drop ship labels) Top of Box



### Flap of Box

