

Front



Product Features

- Wireless functionality with 30 foot range
- Built-in microphone for calls
- One-touch call answering capability
- Up to 3 hours of playtime off a single charge
- Built-in rechargeable battery
- Compatible with smartphones and other media player devices

Power ON/OFF

On the side of Boxanne, slide the power button to ON and a blue LED will flash to indicate that the device is on. Slide the power button to OFF, the blue LED will turn off.

Wireless Connection

When Boxanne is turned ON, it will be automatically discoverable by your wireless capable devices. Select "BOXANNE" from your list of devices. Boxanne will indicate a successful wireless pairing by changing from a steady flashing blue LED light to slow flashing blue LED light (once every 3 seconds). Once your device is connected, the speaker will pair automatically until you manually disconnect it. Boxanne will automatically power off within 13 minutes if no devices are paired.

Buttons

Play // Pause

Press the play button once to play music. Press the play button again to pause your music.

Next + // Back -

Press the next (+) button to skip to the next song. Press back (-) button to return to the previous song.

Volume Control

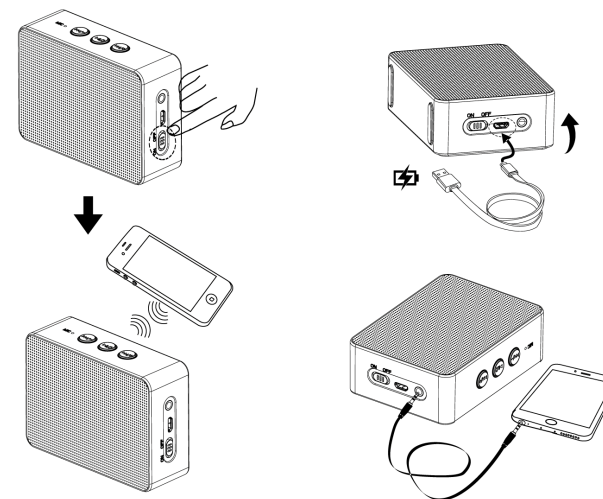
Hold down the next + to increase the volume of the speaker. Hold down the back - button to decrease the volume of the speaker.

Charging

When Boxanne is low on power, connect the micro-USB port with the charging cable and its USB plug into a USB port with power on the other end.

Once-Touch Call Answering

When Boxanne is connected to your wireless phone and you receive a phone call, answer with one touch by pushing the play button once. To ignore the phone call, long-press the button. Disconnect from your call by selecting the same button.



Product Specifications

Dimensions: W 2.6" x H 1.3" x L 3.7"
Material: Shell is made from 100% recycled ABS
Wireless Connection: v2.1+EDR; Class II
Wireless Connection Distance: 30 feet
Frequency Response (0dB at 1 kHz): 100Hz-20kHz
Amplifier Max Output: 3W (THD=10%, 1 kHz@0dB)
Operation Voltage: min 3.2V, max 4.2V DC
Battery Charge Voltage: typ.5V, max 5.5V DC
Battery Charge Current: 300-500mA max
Battery Charge Time: 2.5 hours
Playback Time: 4 to 5 hours
Battery Capacity: 800mAH
Cell Type: 3.7V Lithium-Ion Rechargeable Battery

Origaudis™

Back

This device complies with part 15 of the FCC Rules. Operation is subject to the following two conditions: (1) This device may not cause harmful interference, and (2) this device must accept any interference received, including interference that may cause undesired operation.

FCC Caution: Any changes or modifications not expressly approved by the party responsible for compliance could void the user's authority to operate the equipment.

NOTE: This equipment has been tested and found to comply with the limits for a Class B digital device, pursuant to part 15 of the FCC Rules. These limits are designed to provide reasonable protection against harmful interference in a residential installation. This equipment generates, uses and can radiate radio frequency energy and, if not installed and used in accordance with the instructions, may cause harmful interference to radio communications. However, there is no guarantee that interference will not occur in a particular installation. If this equipment does cause harmful interference to radio or television reception, which can be determined by turning the equipment off and on, the user is encouraged to try to correct the interference by one or more of the following measures:

- Reorient or relocate the receiving antenna.
- Increase the separation between the equipment and receiver.
- Connect the equipment into an outlet on a circuit different from that to which the receiver is connected.
- Consult the dealer or an experienced radio/TV technician for help.